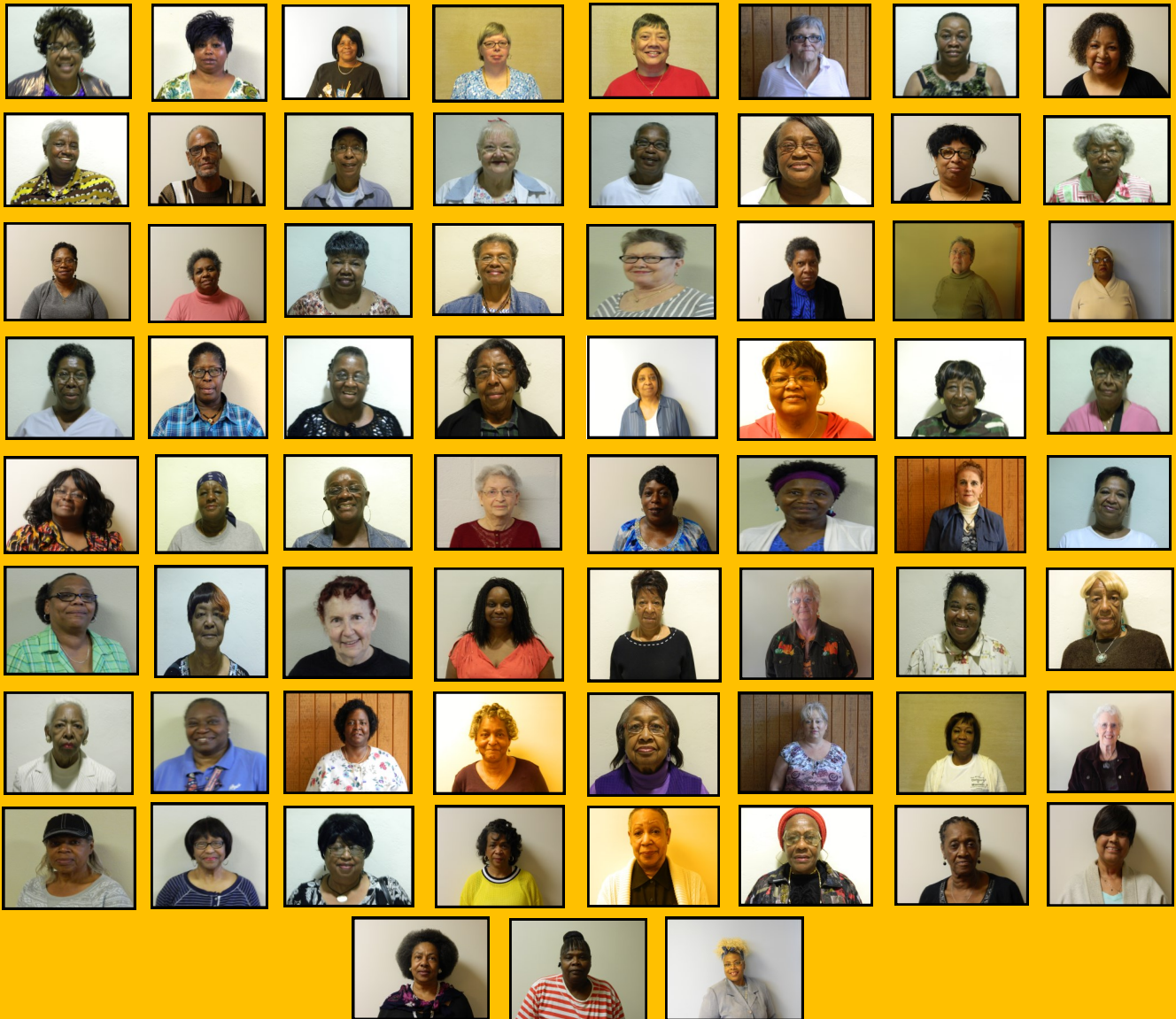




The NEWSLETTER for
SENIOR COMPANIONS
November 2016

- MISSION & GOALS OF THE SENIOR COMPANION PROGRAM -

- **THE MISSION OF THE SENIOR COMPANION PROGRAM** is to engage persons 55 and older, particularly those with limited incomes, in volunteer service to meet critical needs; and to provide a quality experience that will enrich the lives of the volunteers.
- **THE GOAL OF THE PROGRAM** is to provide supportive individualized services, to adults with physical, emotional or mental health limitations, especially older persons, in an effort to achieve and maintain their highest level of independent living.



- SENIOR COMPANION HOLIDAY RECOGNITION -



The Senior Companion Holiday Recognition will be held Tuesday, December 13th from 1-5pm at The Central Presbyterian Church 3501 Campbell, Kansas City, MO.

All active Senior Companions from KC, Lee's Summit and Clay County will join together at this time. We will celebrate with entertainment, hors d'oeuvres and drinks.

We will have an Ugly Christmas Sweater Contest with prizes. This will be in lieu of our monthly in service. Hope to see you here!

- MONTHLY IN-SERVICE TRAINING -



The monthly in-service training is an integral part of the Senior Companion Program. In service training should be designed to build on and enhance existing skills and to provide the Senior Companions with new information relative to their assignments and personal welfare.

This is a time to meet with your Station Manager or the Senior Companion staff and review your timesheet and activity with your client over the past month. Fellowship is also part of the monthly in service but remember to be respectful to your co-workers and our guest speakers who are volunteering their time to make our community a better place through educating us on helpful resources not only to us but the people we serve.

Your actions and participation in these monthly in services reflect on all of us in the Senior Companion Program and also The Shepherd's Center of KC Central. The monthly in-service is mandatory for all active Senior Companions receiving stipends from the Corporation for National Community Service/Senior Corp.

NOVEMBER BIRTHDAYS

Diana Winfield	November 1st
Jacqueline Gordon	November 3rd
Johnna Richert	November 5th
Mary Lewis	November 20th

GOT PAYCHECKS?

For those attending the December 13th Holiday Recognition Inservice — your November timesheet must be received in our office NLT Thursday, December 8th in order to be available at the In-service.

- **Any timesheets received after December 9th, will be processed in January.**
- **If you do not attend In-service, your check will be mailed the following day (provided it is available).**
- **An incomplete timesheet will delay the processing of your check.**

- Christmas and Thanksgiving Baskets and Giveaways -

The following organizations are offering such things as Christmas and Thanksgiving dinners, baskets etc. Please call these organizations directly for details, required documents, areas being served, and eligibility requirements.

- Salvation Army, Westport (816) 753-6040
- KC Rescue Mission (816) 421-7643
- Della Lamb (816) 842-8040
- City Union Mission (816) 329-1444
- Seton Center (816) 231-3955

Be thankful for what you have; you'll end up having more. If you concentrate on what you don't have, you will never, ever have enough.

Oprah Winfrey